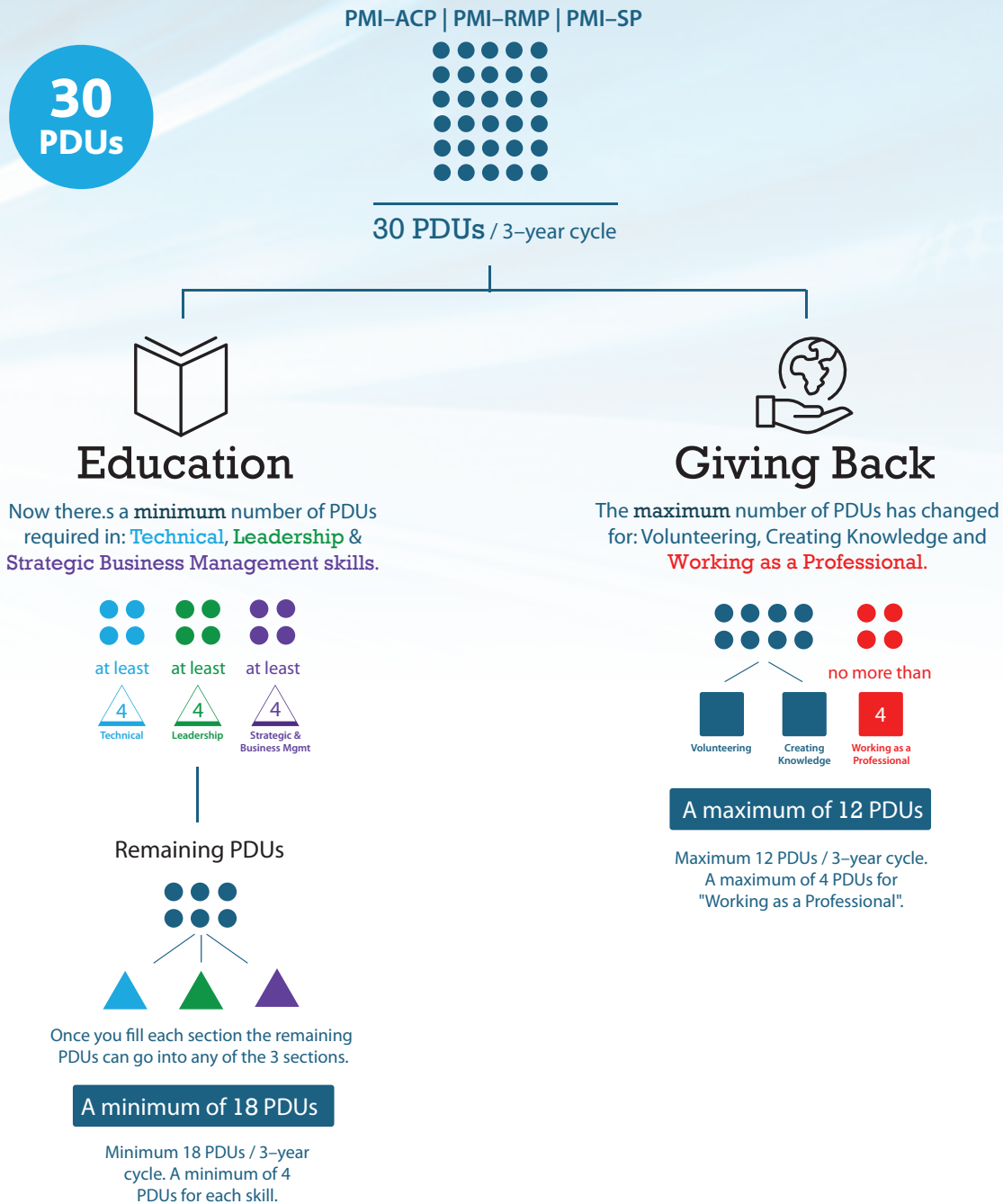


Effective 1 December 2015 – Important Updates to the Continuing Certification Requirements (CCR) Program

The overall framework of the CCR program remains the same. You will continue to earn PDUs in the categories of **Education** and **Giving Back**. **How** PDUs in those categories are classified will be different.

See the details.



All the details are consolidated into a central location. Go to: PMI.org/ccr-info Bookmark it and return periodically for the latest announcements.